



**CREATING A SCALED,
MULTI-ASSET EXPLORATION
COMPANY**

CSE:CC | FSE:8ZR | OTCQB:CCOOF





FORWARD LOOKING STATEMENTS



Disclaimer and Confidentiality Agreement

The presentation contained in this document has been prepared by Core Silver Corp. using its best efforts to realistically and factually present the information contained. However, subjective opinion, dependence upon factors outside Core Silver' control and outside information sources unavoidably dictate that Core Silver cannot warrant the information contained to be exhaustive, complete or sufficient. In addition, many factors can affect the Presentation which could significantly alter the results intended by Core Silver, rendering the Presentation unattainable or substantially altered. Therefore, interested Users should conduct their own assessment and consult with their own professional advisors prior to making any investment decisions.

This Presentation does not constitute a prospectus or public offering for financing, and no guarantees are made or implied with regard to the success of Core Silver' proposed ventures.

There is no guarantee that valuable minerals can be produced profitably from our projects, or at all.

The Presentation is being disclosed to User for User's discussion, review, and/or evaluation only. User agrees to hold the Presentation, and all related information and discussions, in strict confidence, except that User may disclose the Presentation to a limited number of advisors and employees of the User to the extent necessary for User to adequately evaluate the Presentation. User warrants that any such persons shall be advised of the confidential nature of the Presentation before gaining access to the same and that no such advisor or employee shall use or disclose the Presentation except as specifically permitted by this Agreement.

Historical Geological Information

Any geological information and results presented which were not conducted by Core Silver are believed to be accurate but have not been verified.

Projections

The presentation's financial and other projections have been prepared using assumptions and hypotheses created by Core Silver management based on information provided to them and through due diligence. The assumptions used in the preparation of the projection reflect management's intended course of action for the projection period based on management's judgment as to the most probable set of economic conditions if the assumptions they consider most likely are realized. The assumptions may not necessarily be the most probable and are based on information existing as at the date of this presentation.

The assumptions are those that management believes are significant to the projection. Some assumptions may not materialize and unanticipated events and circumstances may occur subsequent to the date of this projection; therefore, the actual results achieved during the projection period may vary materially from the projections. This projection is based on our assumptions and there is a major risk that actual results will vary, perhaps materially, from the results projected.

Management does not intend to update this projection subsequent to its issue.

Nicholas Rodway, P.Geol. (Licence# 46541) (Permit to Practice# 1000359) is CEO and Director of the Company, and qualified person as defined by National Instrument 43-101- Standards of Disclosure for Mineral Projects. Mr. Rodway has reviewed and verified the scientific and technical data in this corporate presentation. Verification included review of field notes, sample tags, analytical certificates, Q/A-Q/C protocols and comparison of results to original data sets. No limitations were noted during the verification process.

EXECUTIVE SUMMARY & STRATEGIC RATIONALE

- **Efficient deal structure**
 - Structuring the consideration entirely in shares preserves the Company's cash position while aligning the Arcus shareholders with long-term shareholder value creation. The pro forma company is expected to have approximately \$7m in cash.
- **Creation of a scaled, multi-asset exploration company with improved access to capital**
 - Increased scale and market relevance are expected to enhance financing capacity and support the concurrent advancement of multiple projects.
- **Complementary jurisdictions and asset mix drive operating and talent synergies**
 - A broader geographic footprint and diversified asset base enable shared technical teams, optimized exploration planning, and lower per-project overhead.
- **Balanced exposure across multiple strategic commodities enhances risk-adjusted outcomes**
 - A combined copper and silver portfolio diversifies commodity-cycle risk while maintaining leverage to metals with distinct demand drivers and long-term structural support.

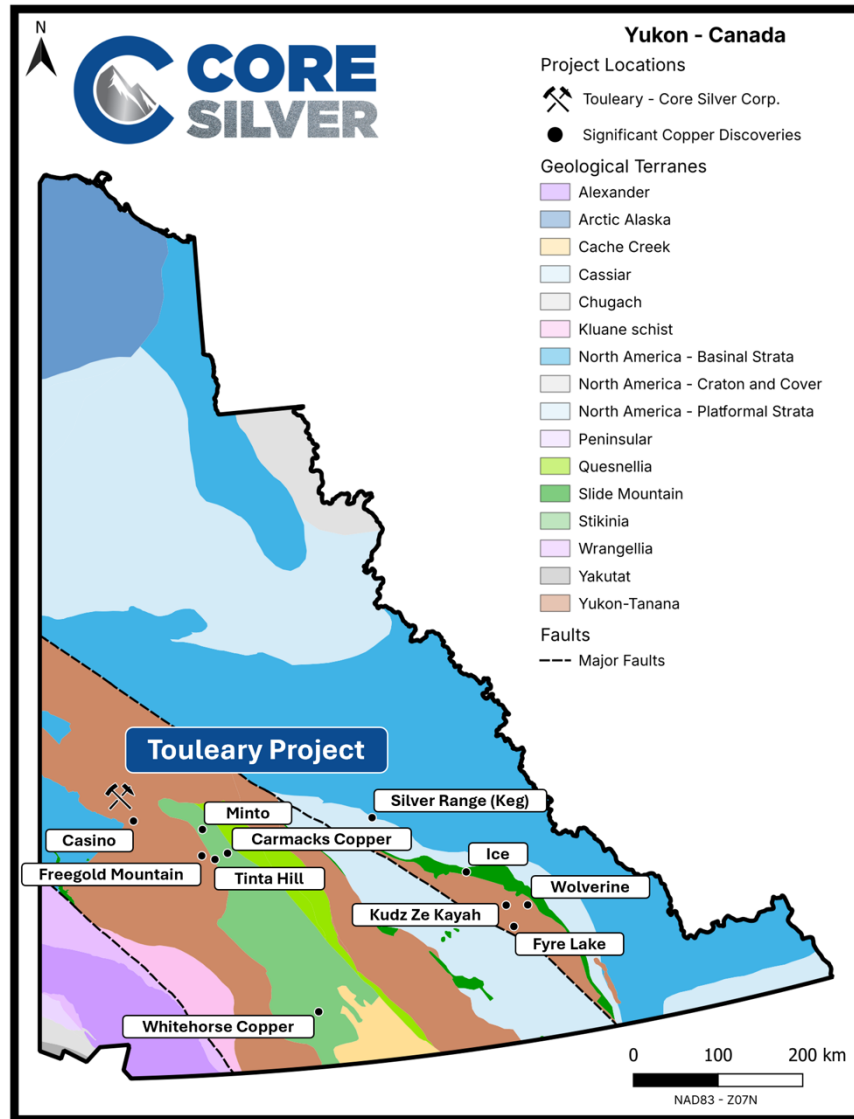
PRO-FORMA MATH & IMPLIED VALUE TO ARCUS

Transaction Assumptions:

- *1-for-1 exchange ratio (1 Arcus share per 1 Core Silver share), no concurrent financing*

	Shares	% Ownership
Core Silver	32,920,565	61%
Arcus	21,221,140	39%
Pro-Forma Total	54,141,705	100%

TOULEARY PROJECT – OVERVIEW



- **High-grade historical drilling intercepts**

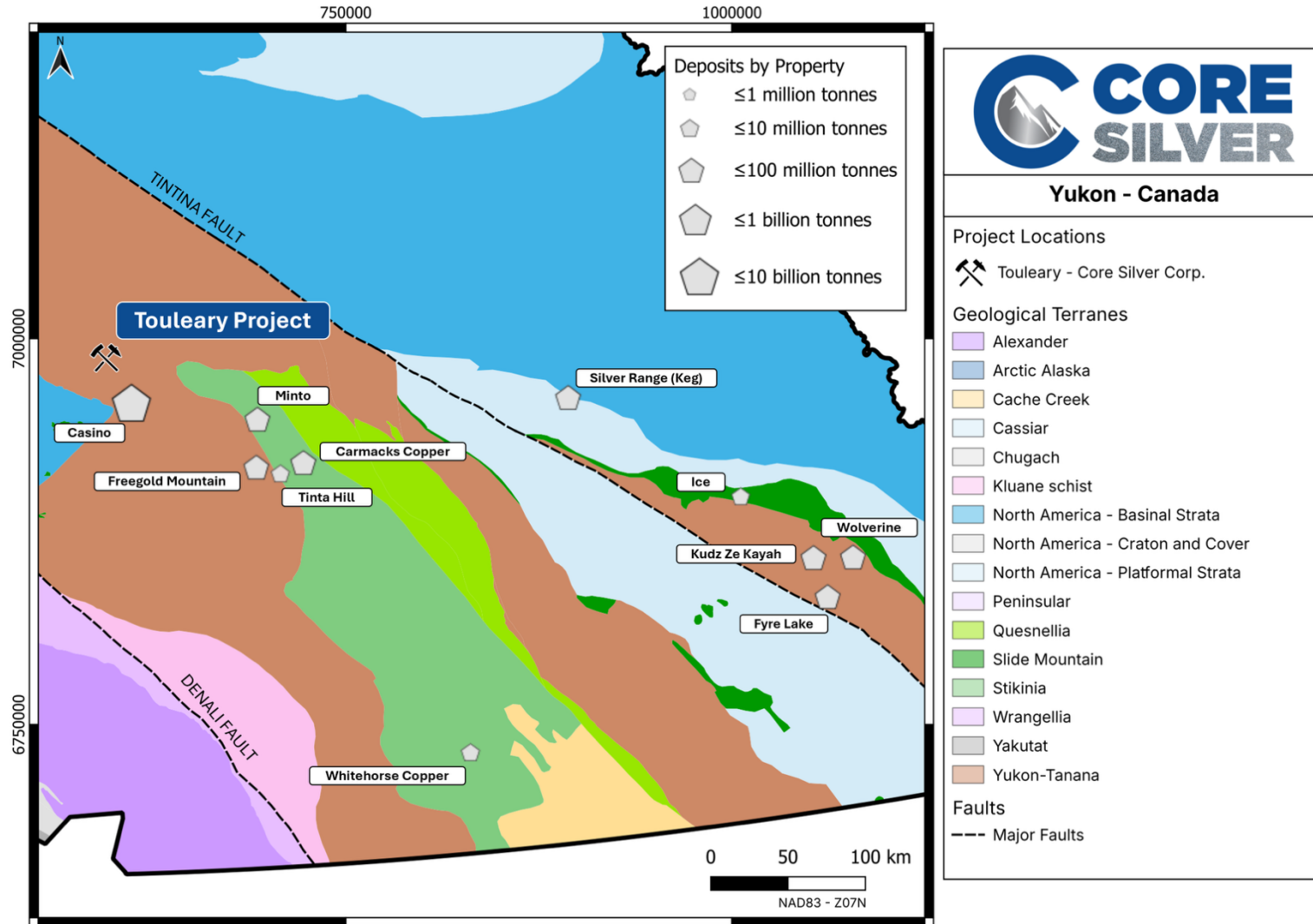
- Five holes were drilled at The Touleary Project in 2011; all intercepted Cu, Zn, Pb, Ag, Au bearing volcanogenic massive sulphide (VMS). The results were never followed up on.
- Drill hole TL-11-05 intercepted 2.25m of 7.2% Cu, 116 g/t Ag, 3.6 g/t Au and 4.3% Zn from 115.62m and 14.15 m of 1.4% Cu, 16.5 g/t Ag, 0.77 g/t Au and 0.3% Zn from 124.50m.

- **District-scale Potential**

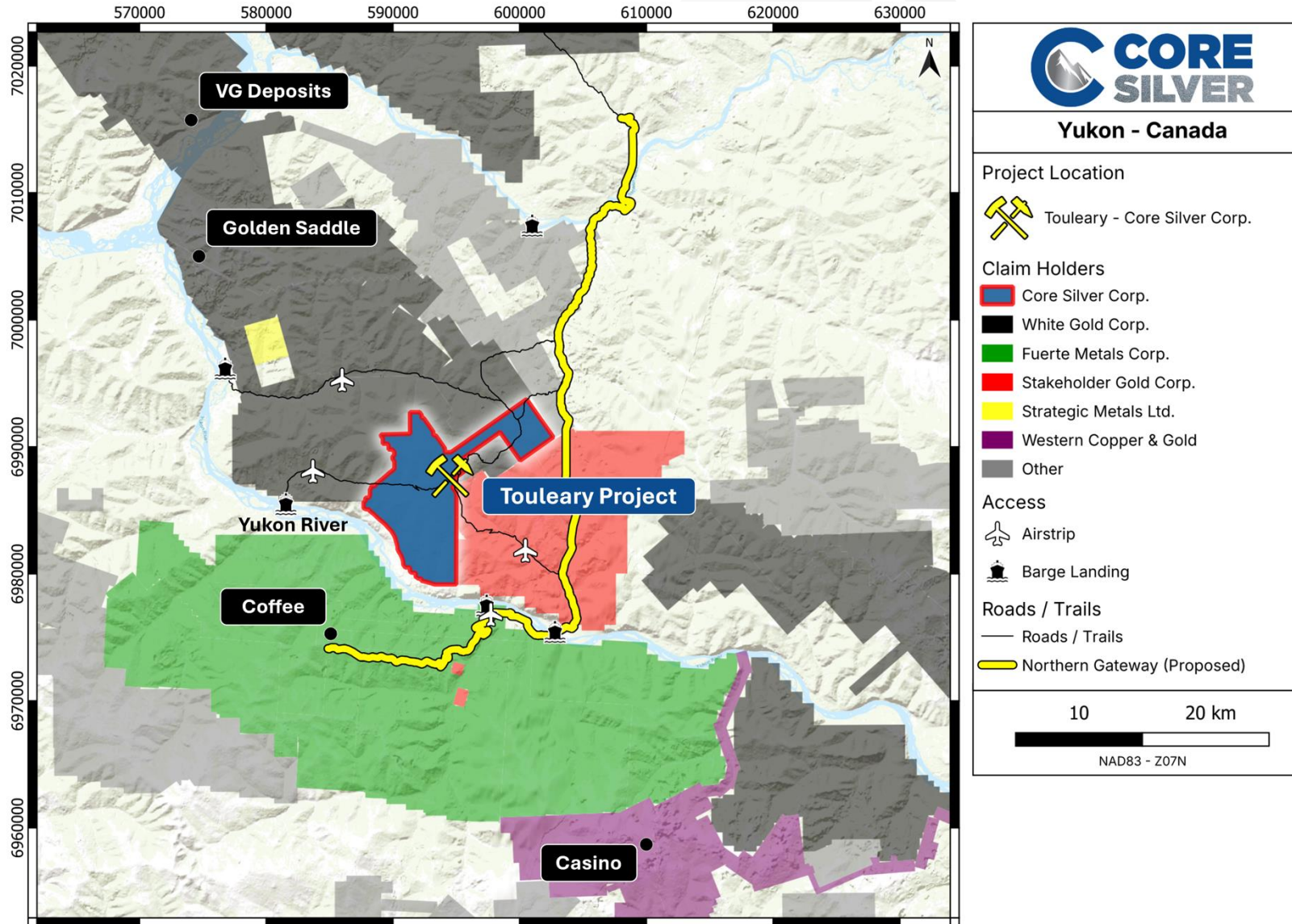
- The Touleary Project is situated in the prolific Tintina Gold Province which hosts many world class deposits including VMS deposits with a total resource inventory of >41Mt.

- **The Touleary Project is fully permitted for drilling in 2026 with eight high-priority drill targets**

TOULEARY PROJECT – NEW VMS DISCOVERY IN A WELL-KNOWN COPPER ENDOWED DISTRICT



TOULEARY PROJECT – EXPLORATION IN A PREMIERE JURISDICTION

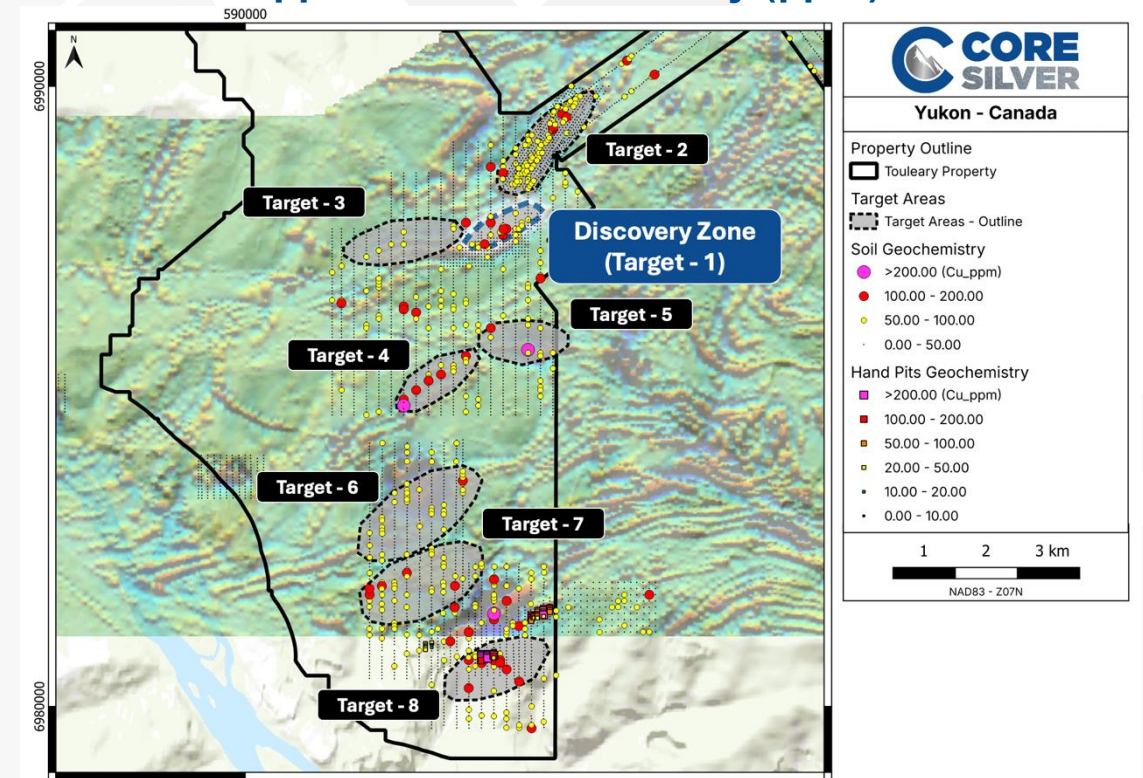


DISCOVERY ZONE

In 2011, Arcus discovered the first significant VMS system in the White Gold district of north-central Yukon at its Touleary Project. Diamond drilling in 2011 targeted a 300x100 metre area within a 1,200-metre-long zone of coincident geophysical and intermittent gold-in-soil geochemical anomalies.

2011 Drill Results (300m Strike Tested)							
Hole_ID	From_m	To_m	Interval_m	Cu_%	Ag_g/t	Au_g/t	Zn_%
TL-11-01	85.61	91.70	6.09	1.37	14.50	0.80	0.41
TL-11-02	124.00	127.17	3.17	2.38	32.90	2.01	1.38
TL-11-03	64.21	64.80	0.59	1.42	36.40	1.15	2.81
	90.36	90.97	0.61	4.01	73.90	2.18	0.93
TL-11-04	93.88	106.75	12.87	0.21	7.69	0.55	N/S
TL-11-05	115.62	117.87	2.25	7.18	116.00	3.55	4.30
	124.50	133.65	14.15	1.45	16.50	0.73	0.28

Copper Soil Geochemistry (ppm)



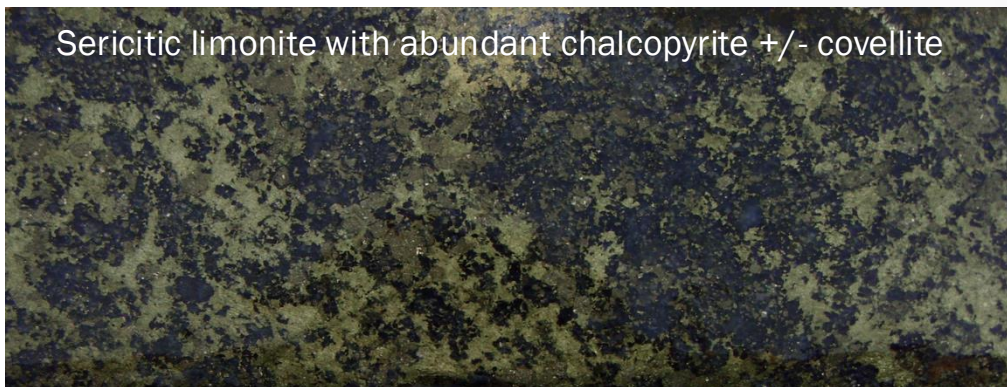
All drill holes intercepted mineralization centered around a magnetic low at the Discovery Zone. Future drilling will aim to extend the mineralized trend and test the additional seven targets.

DISCOVERY ZONE – CROSS SECTION AND MINERALIZATION STYLES



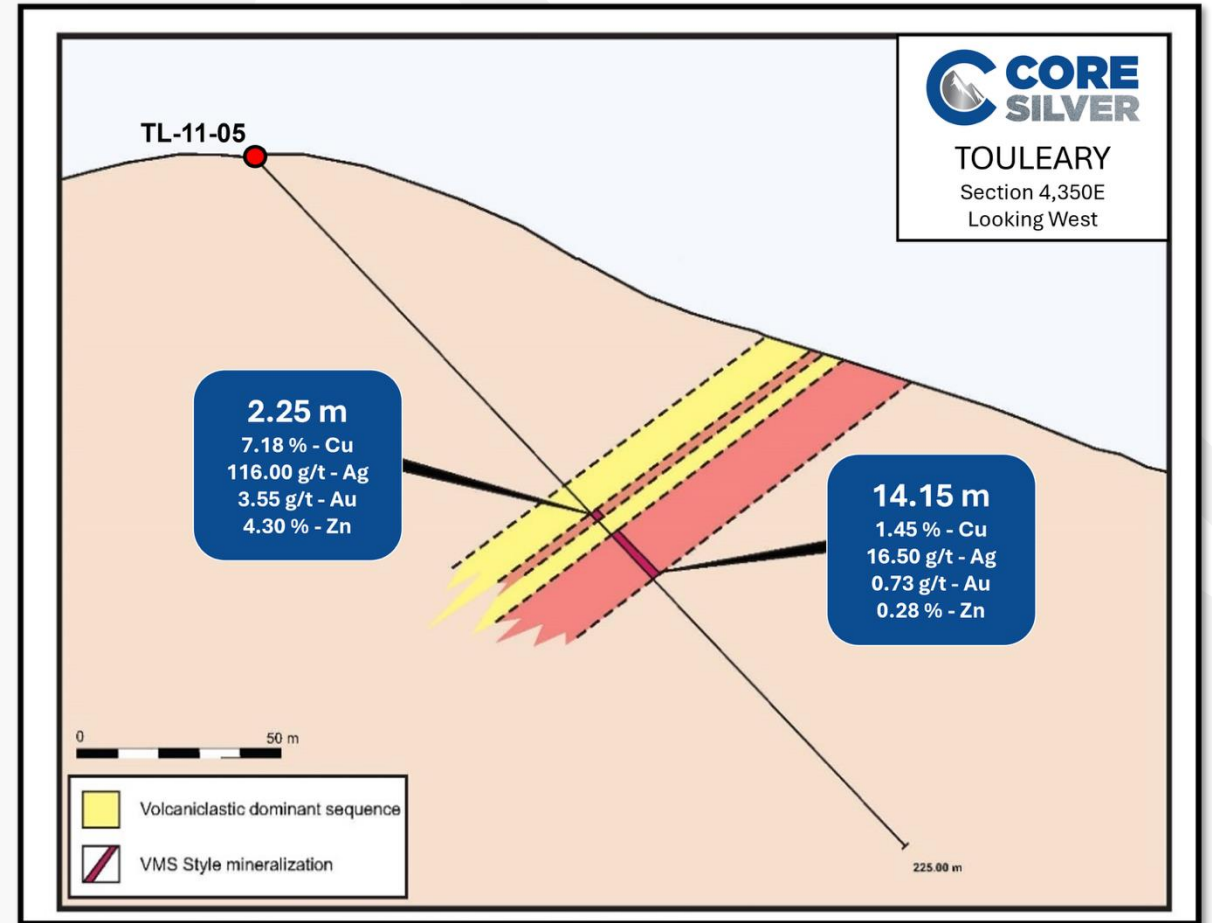
Hole Number: TL-05-11

Depth: 135.00m



Hole Number: TL-05-11

Depth: 116.025m





CONTINUED INVESTMENT IN THE BLUE PROPERTY



Core Silver holds **100% ownership** of the Blue Property which encompasses both the **Silver Lime Porphyry-CRD** Project and the **Laverdiere Skarn-Porphyry** Project located 15 km apart.

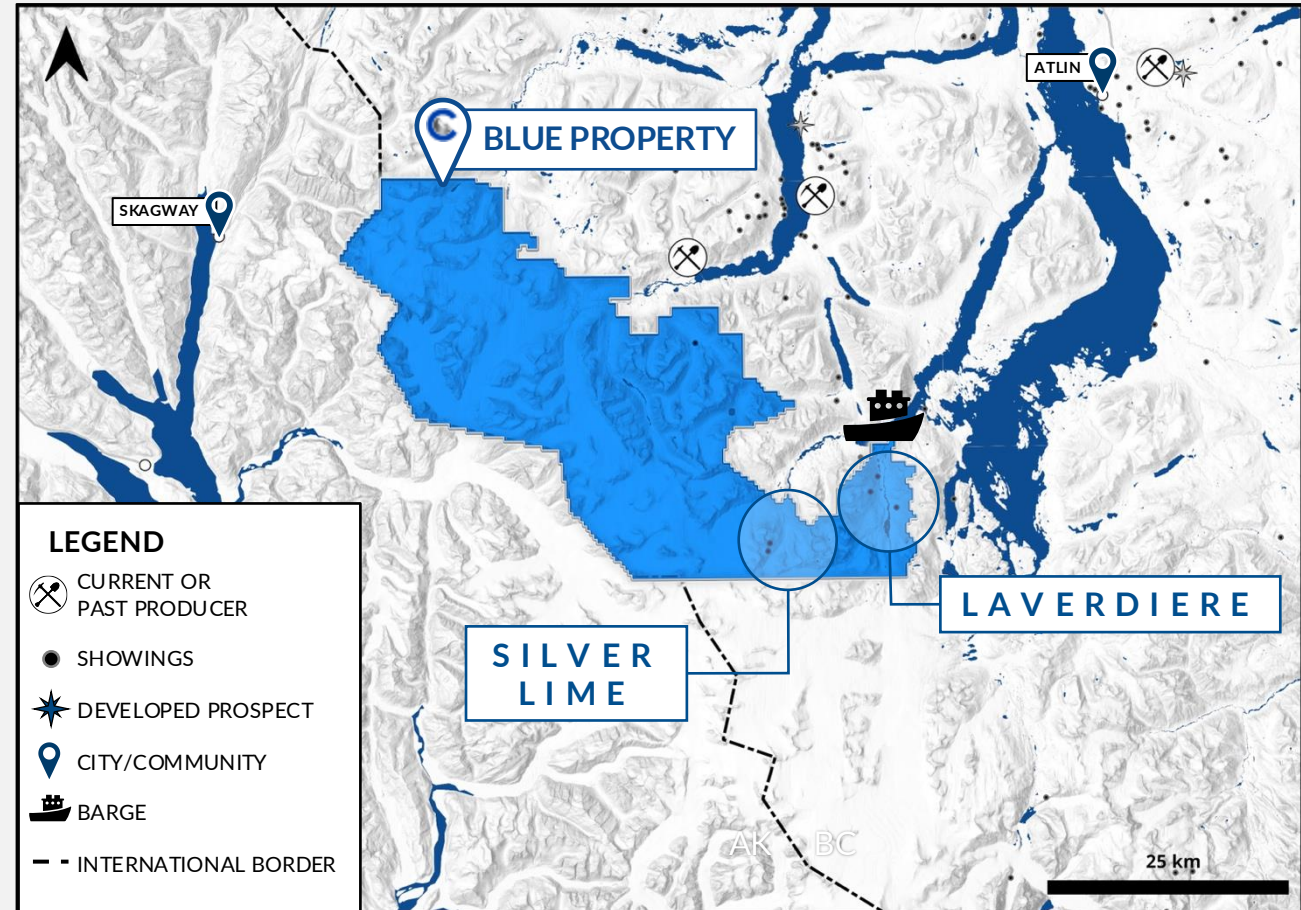
Massive 1,140 km² district scale contiguous land position in British Columbia's prolific Atlin Mining District.

Located 48 km southwest of Atlin, British Columbia (accessible all-season).

Atlin & Tagish Lakes provide **cost effective exploration mobilization** and potential low cost ore transportation.

All mining services available in Atlin including accommodations, heavy equipment, and transportation.

All other services available in **Whitehorse located 170 km north** which is **highway accessible**.



PROJECTS

THE SILVER LIME PROJECT

A mineralized footprint much larger than many of the world's largest CRD deposits

The Silver Lime CRD-Porphyry Project is located at the centre of the Blue Property. The Project currently consists of 7 highly prospective targets.

- **Grizzly CRD Target:** High-grade Ag-Zn-Pb-Cu-Au carbonate replacement manto, chimney, and dyke-contact skarn mineralization.
- **Sulphide City Target:** Mo-Cu porphyry and associated high-grade Zn-rich skarn target.
- **Gally CRD Target:** Two Ag-Zn-Pb-Cu-rich, massive-to-semi-massive carbonate replacement zones.
- **Jackie CRD Target:** Multiple surface exposures of high-grade massive sulphide occurrences.
- **Pete's CRD Target:** High-grade carbonate replacement zone.
- **Amp Target:** Numerous sulphide-bearing vein generations and stringers, semi-massive-to-massive sulphide Ag-Zn-Pb-Cu-Au carbonate replacement mineralization.
- **Falcon Target:** Two exposed, northwest trending gold and silver-bearing quartz veins.





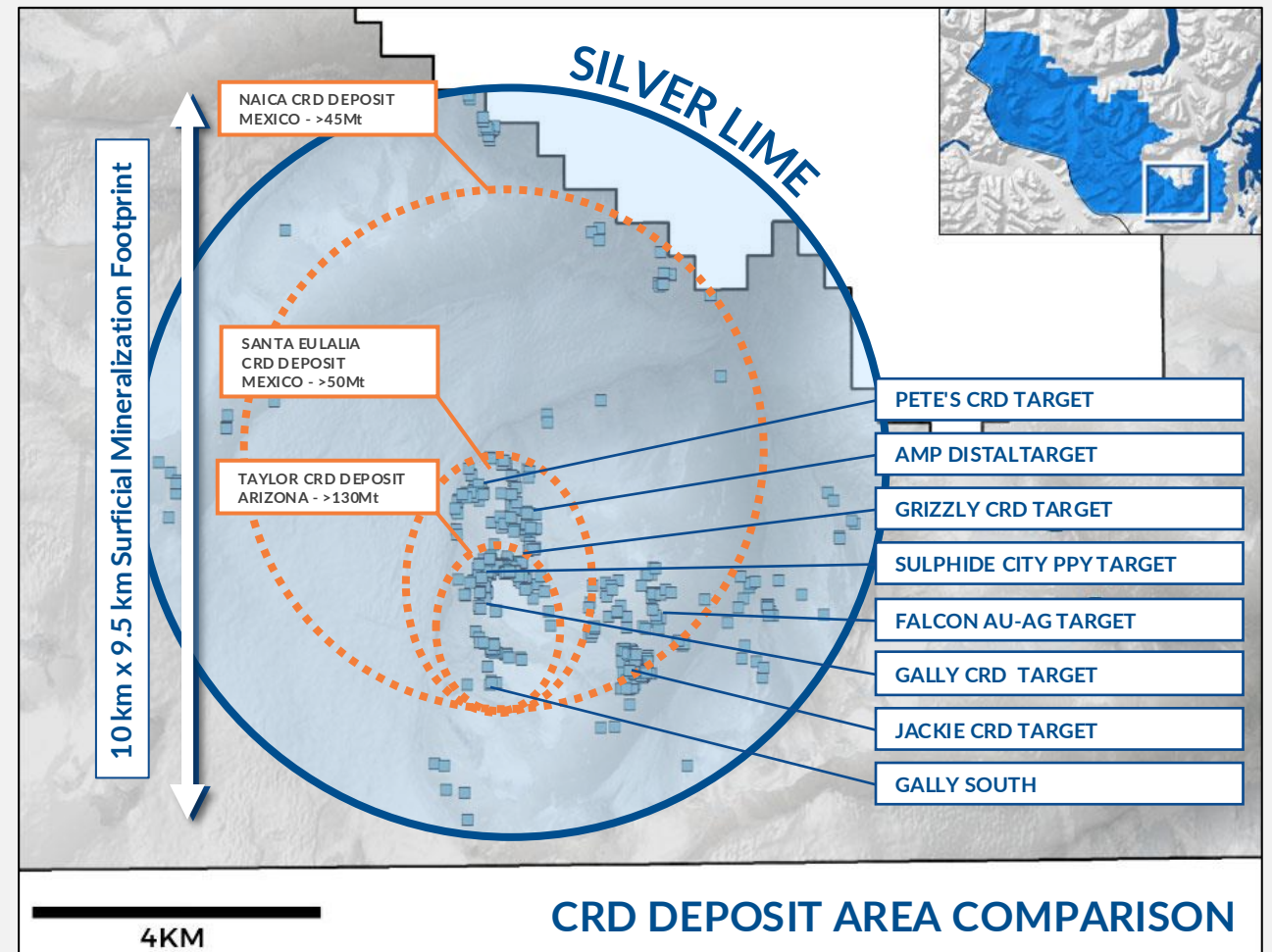
SILVER LIME SILVER PROJECT LOCATION & SCOPE



The Silver Lime CRD-Porphyry Project targets span the complete mineralization spectrum from Porphyry Mo-Cu to Fe-Zn-Cu-Ag massive sulphide skarn and Ag-Pb-Zn-Cu±Au carbonate replacement mineralization, to distal, sediment-hosted Ag-Au bearing quartz veining and Ag-Au-bearing base metal sulphide vein occurrences.

Carbonate units range up to 250 meters thick and are exposed at surface over a mapped strike length that currently measures over 8.5 kilometers. These host rocks are folded and intercalated with schist, quartzite, and amphibole-bearing gneiss.

- The Silver Lime Project has an extremely large surficial expression of CRD mineralization, extending over an area of 10 km by 9.5 km.
- The current mineralized footprint is much larger than many of the world's largest CRD deposits.





SILVER LIME SILVER PROJECT MINERALIZATION



PETE'S CRD TARGET

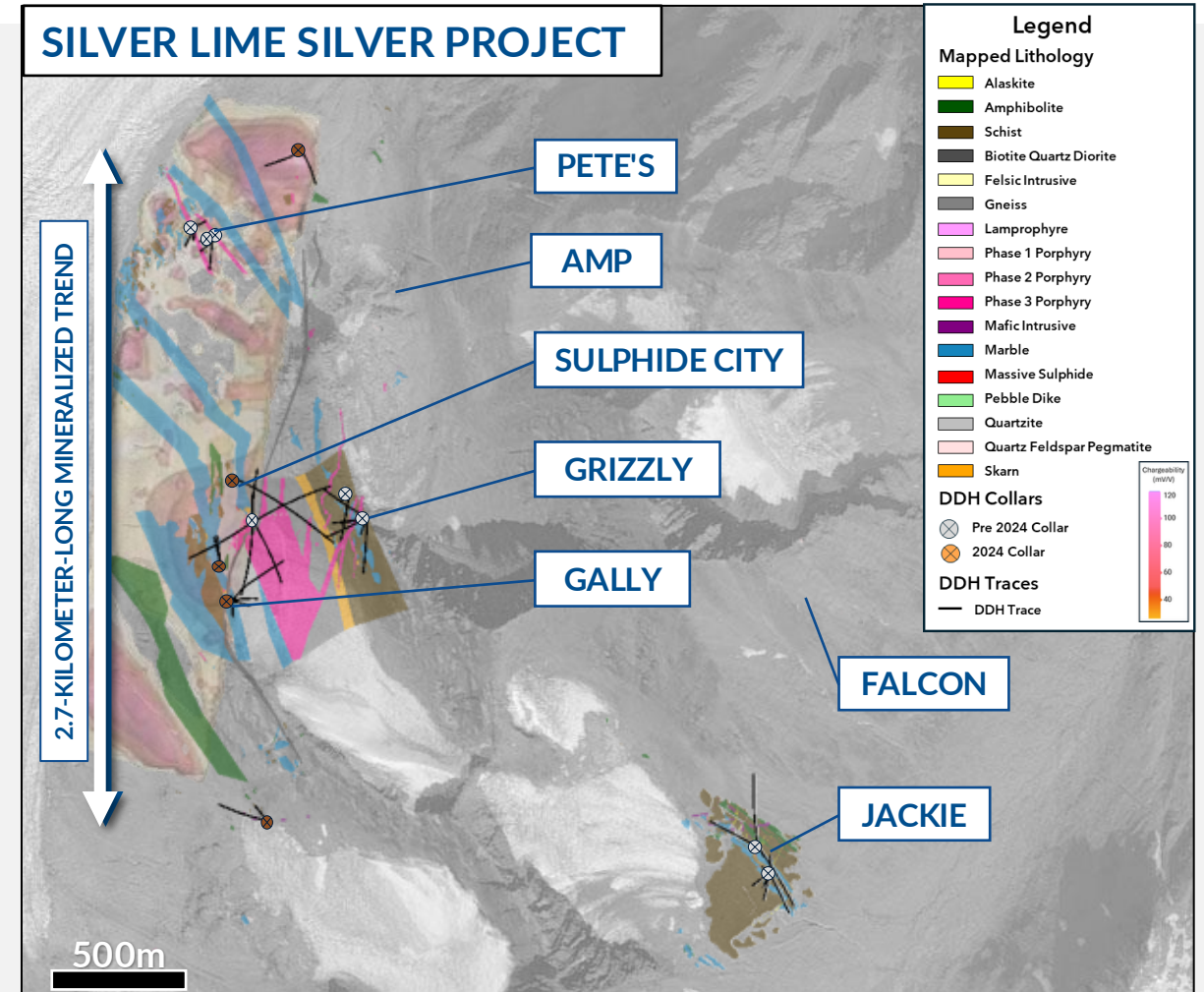
SLM23-028 - 6.40m of 159g/t Ag, 16.4% Pb+Zn, and 0.23% Cu from 27.43m depth, including 2.07m of 250g/t Ag, 23.2% Pb+Zn, and 0.31% Cu.

GRIZZLY CRD TARGET

SLM22-011 intersected 5.64m of 254g/t Ag, 5.1% Pb, 4.8% Zn, 0.11% Cu and 0.12g/t Au from 57.36m core depth including 1.16m of 1,145g/t Ag, 23.2% Pb, 23.5% Zn, 0.52% Cu, and 0.37g/t Au.

SULPHIDE CITY PPY - SKARN TARGET

SLM22-006- 193m of 0.012% Mo from 277m depth, including 10.82m of 0.043% Mo, 3.5m of 0.10% Mo, and 0.63m of 0.39% Mo. SLM22-006- 3.3m of 47g/t Ag and 0.25% Cu from 453m depth, including 0.67m of 117g/t Ag and 0.37% cu.





CORPORATE OFFICE

Suite 1450 - 789 West Pender St.
Vancouver, BC V6C 1H2

Nick Rodway
nrodway@coresilvercorp.com

CSE:CC | FSE:8ZR | OTCQB:CCOOF

CORPORATE PRESENTATION . 2026

THANK YOU

